



LivingHeat

UNDERFLOOR HEATING WORLD

www.livingheat.co.uk

V0614

“Bringing Heat To Life”



Digital Thermostat User Manual

Buttons and LCD display

Button / Icon	Description	Button / Icon	Description
	Turning on/off thermostat	AUTO	Auto mode(select by button M)
	Menu button / Program button Auto/Manual mode selection		Manual mode(select by button M)
	Set the time and week days		Vacation mode
	Increase the set value		Temporary temperature override
	Decrease the set value		Frost protection activated
	The buttons are locked.	SET	Set temperature
	Heating is turned on		Programmes number
	The difference between set temperature and room temperature more bars means more difference	RT	Room temperature
		FT	Floor temperature
			Economy temperature
			Comfort temperature



General Settings

Press button to Turn on/off the thermostat. When thermostat is turned off, the LCD will only display current temperature reading. When the thermostat is turned off, press and hold button M for 3 seconds to bring up a configuration menu. In this mode, press button M to select different features' setting.

Menu #	Features description	Features Explanation	Adjustment (press up or down button to adjust)
1	Model (model selection)	This thermostat is a combination model allowing you to choose between 3 different models. A, AF and F model. A model: air only, with built in sensor AF model: air & floor, with both built in and remote sensor F model: floor only, with remote sensor	A, AF, F
2	Sd (switching differential)	The numbers of degree difference before switching. The default is 1°C which means the thermostat will switch the heating on 0.5°C below the set temperature and will turn it off 0.5°C above the set temperature. With a 2°C differential, the heating will switch on 1°C below the set temperature and will switch off 1°C above the set temperature.	1 = 1 degree(default), 2 = 2 degrees.....
3	ATC (air temp calibrate)	This is to calibrate air temperature if required.	-1 = decrease 1 degree, 1 = increase 1 degree...
4	FTC (floor temp calibrate)	This is to calibrate floor temperature if required.	-1 = decrease 1 degree, 1 = increase 1 degree...
5	PTD (program time delay)	This gives more time for user to set the programmes before reverting back to standard display	5s , 10s , 15s , 20s (default) , 25s, 30s.
6	TR-AF (AF model only) (TR= Temp readout)	This gives option to choose to show air temperature, floor temperature or to show both floor & air in interval.	A= to show air temperature, F=to show floor temperature, A-F = to show both in 5 second intervals
7	MAXFT (set maximum floor temp in AF model)	This is to protect the floor surface.	40 degree(default)
8	BL (backlight turning-on time setting)	This is to set the backlight turning-on time. User can also set the backlight always on or off.	30 seconds(default) On= always on, OFF= always off
9	TF (temperature format)	This allows users to select between °C or °F.	°C or °F
10	CLOCK	12/24 HOUR clock system selection	24 (default), 12- hour or 24-hour clock system
11	FP(Frost protection)	This is to avoid room temperature goes below 5°C	on= activated, off= deactivated
12	SC(setpoint configuration)	This allows user to select 2 sets of default programmed setpoints.	4 means 4 independent setpoints. 2 means: setpoint 1 is the same to setpoint 3, setpoint 2 is the same to setpoint 4. If setpoint 1 is changed, setpoint 3 will be changed automatically. If setpoint 2 is changed, setpoint 4 will be changed automatically.

Remarks: Not all menus are visible in certain models. For example, if you set the thermostat to A or F model, menu 6 and menu 7 will not be visible.

	Please Note: one of the following error messages will appear if one of these problems occur: LO - This error means that the room or floor temperature is below 0°C HI - This error means that the room or floor temperature is greater than 50°C If the floor sensor is short-circuit or broken, the LCD will display "Err" and the thermostat will cut off output.
	This product should be installed by a qualified electrician.

See overleaf for further setting up information

Thermostat Instructions

Auto / Manual Mode

Press button M to select Auto/Manual mode. In Manual mode, the thermostat maintains a constant set temperature manually set by the user. In Auto mode, the thermostat executes the preprogrammed schedules. To adjust these schedules, follow the easy steps below.

Program your thermostat

- 1 Press and hold button M for 5 seconds until "PROG" is shown with the Day flashing. Use up or down button adjust the day (hold up or down button for 5 seconds to set all days the same).
- 2 Press button M to bring up the program 1 (1). Use up or down button to set the start time (default 07:00). (Hold up or down button to change by 15 minutes each time.)
- 3 Press button M again and use up or down button to set the desired temperature to be maintained for program 1. (default 22 °C)
- 4 Press button M to bring up the program 2 (2). Use up or down button to set the start time (default 09:30). (Hold up or down button to change by 15 minutes each time.)
- 5 Press button M again and use up or down button to set the desired temperature to be maintained for program 2. (default 16 °C)
- 6 Press button M to bring up the program 3 (3). Use up or down button to set the start time (default 16:30). (Hold up or down button to change by 15 minutes each time.)
- 7 Press button M again and use up or down button to set the desired temperature to be maintained for program 3. (default 22 °C)
- 8 Press button M to bring up the program 4 (4). Use up or down button to set the start time (default 22:30). (Hold up or down button to change by 15 minutes each time.)
- 9 Press button M again and use up or down button to set the desired temperature to be maintained for program 4. (default 16 °C)
- 10 Press button M to accept and exit.

Note: It is faster to program the same schedule for the entire week and then to adjust the exceptional days.

► To erase program 2 and 3 for Saturday and Sunday, see below.

- In step 1, select Saturday or Sunday.
- In step 4, instead of using up or down button, using button (⊕) will erase the time. (---).
- In step 6, instead of using up or down button, using button (⊕) will erase the time. (---).

Set the Time and Day

This thermostat is fitted with a real time clock. It is essential that the clock time and day are set accurately if you require your programmed events to start on time. Follow the below easy steps.

- Step 1. Press the button (⊕) once and the time will flash
- Step 2. Use up or down button to change the time (Hold up or down button to change by 15 minutes each time.)
- Step 3. Press button (⊕) again, the day of the week will flash
- Step 4. Use up or down button to change the day of the week
- Step 5. Press button (⊕) again to accept and exit

Resetting factory defaults

Your thermostat has the ability to reset all settings to the factory defaults. If you are certain you want to do this: In standby mode (when thermostat is turned off), press and hold button M and (⊕) for 5 seconds until "RESET" is shown for 5 seconds on LCD.

Lock the buttons

To lock the buttons, press and hold the up and down buttons for 3 seconds until you see a lock icon appearing, to unlock, repeat the steps above.

View floor temperature

If thermostat is set in AF model, and set to show air temperature only, press and hold the down button for 3 seconds, floor temperature will show and it will automatically revert back to air temperature in 5 seconds.

Temporary temperature override

To temporarily override the current set temperature,

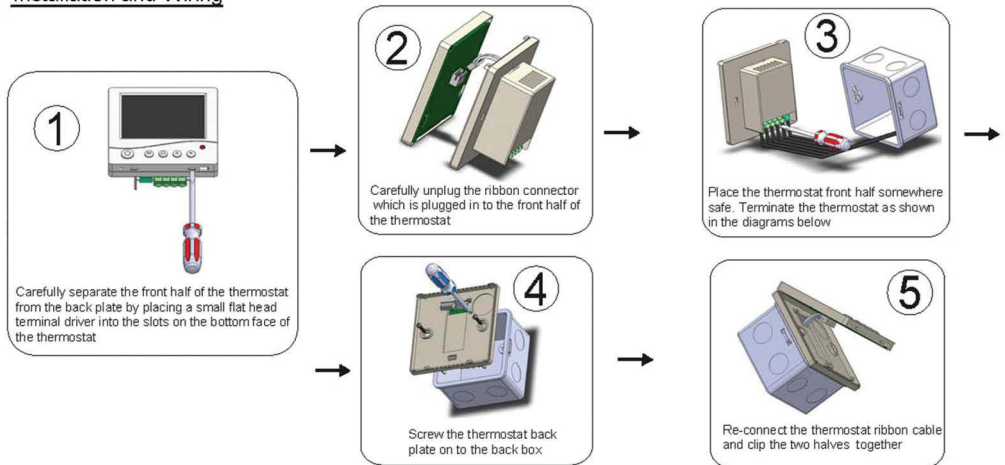
1. Press up or down button once, the set temperature starts flashing
2. Press up or down button again to adjust the set temperature
3. Wait for 5 seconds to confirm the setting with "OVERRIDE" shown on LCD

Now your thermostat will maintain the new set temperature until the next setpoint. To cancel the override setting, press and hold button (⊕) for 5 seconds until "OVERRIDE" disappear.

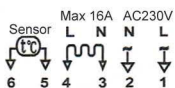
Vacation mode

To set vacation mode press and hold the up button for 3 seconds until (⊕) appears. Use same procedure to exit this mode. Vacation mode will maintain a set temperature (default 10 °C) all the time. Press up or down button to change the set point and wait for 5 seconds to accept and exit.

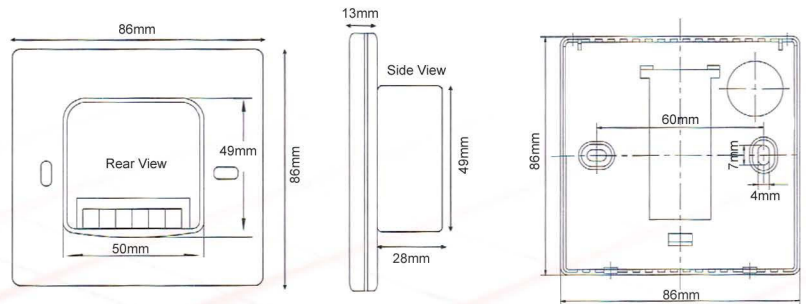
Installation and Wiring



Wiring Diagram



Dimensions



This product should be installed by a qualified electrician

Floor Sensor Control Card, (To be completed by a qualified electrician).

Floor Sensor	Test	Before Commencing of installation (Unrolled)	After installation of heating system but before laying flooring	After laying floor covering.
	Resistance of cable (Ohms)			

Date of testing :

Company Name:

Electricians signature:

Contact telephone No:

Print: